

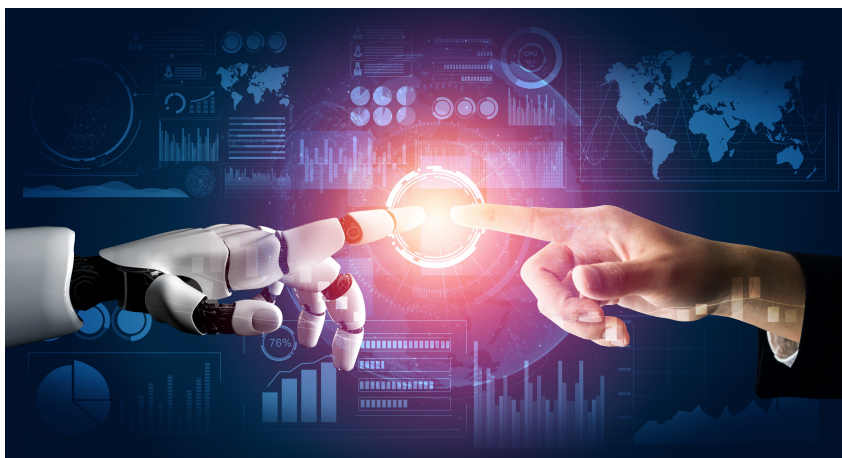
Please add our email odiseo@escolaeuropea.eu to your contact list to make sure that our emails reach your inbox directly



UPCOMING COURSES

[Port Operations](#) | [SURCO Port - Rail Operations](#) | [MOST Iberia 2023](#)

Artificial Intelligence is here to stay - but at what cost?



Technology has been advancing at an incremental rate since the late 80s, early 90s. Long gone are the days when you had to call an operator to connect you to another person. It also appears that the days of “assistants” will also soon be behind us. Artificial Intelligence is improving our productivity, changing the way we carry out daily tasks and work. But at what cost?

By Eduard Rodés, Director of the Escola Europea - Intermodal Transport

[Full article](#)

Blue  Innovation



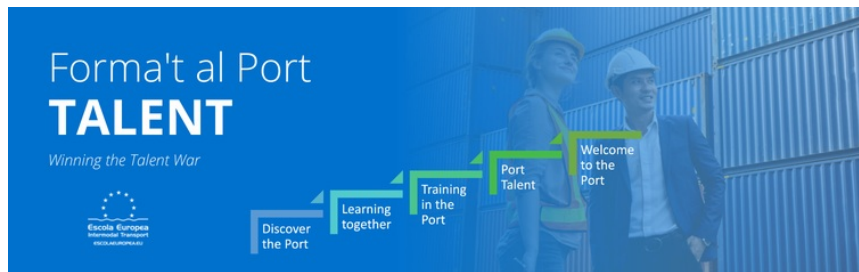
#BlueInnovation - Electronic Bills of Lading

The Electronic Bill of Lading (eBL) is an electronic version of the traditional paper-based Bill of Lading used in the shipping industry.

Watch our video to get a closer look at this innovation:

[Check out the video](#)

[Read the article](#)



#DidYouKnow -

Barcelona Port's Training and Employment Group

The initiative – called the Training and Employment Group of the Port of Barcelona – exists today to ensure that the Barcelona Port Community (which helps fuel the city's growth) can access the skills and training opportunities needed

[Full article](#)

Back to Basics: What is a Smart Port?

With the series that we are calling #BackToBasics, we will begin explaining some concepts that are central to the transport sector today, but which can be confusing to some. We will kick-start our series with the concept of a "Smart Port."

[Read more...](#)

Back to Basics: Port Terminals

Just like pieces of a puzzle, port terminals are the different parts that make up a port. In this article we take a closer look at port terminals, looking at the kinds of port terminals that exist and at their corresponding characteristics.

[Read more...](#)

[Check out the full #DidYouKnow series](#)



Upcoming Courses



**PORT OPERATIONS:
VESSELS & GOODS**

03-14 July 2023
Location: Barcelona
Language: EN

[Course programme](#)



26 - 28 Sept 2023
Location: Barcelona
Language: ES

[Course programme](#)



21 - 24 Oct 2023
Location: BCN - CIV
Language: ES / EN

[Course programme](#)



TEMPERATURE CONTROLLED SUPPLY CHAINS

20 - 29 Nov 2023
Location: Barcelona
Language: ES/EN

[Course programme](#)

Escola News

An immersive programme for Indonesian port executives

Between the 14th and the 17th of March, the Escola Europea-Intermodal Transport, together with Deloitte Spain and their counterparts in Indonesia, carried out an immersive programme.

[Read more...](#)

Maritime Connectivity - what it means for the Mediterranean

We live in an increasingly digital world – there is no doubt about that. Digital literacy and technical capabilities are skills that are now indispensable in employees in all sectors.

[Read more...](#)

YEP MED organises a course on board of a vessel for students who completed the training in port logistics

All the while striving for excellence, the partnership is taking our training further by organising a unique edition of the YEP MED training – called YEP MED Talent – which will offer skills that foster team culture and collaboration among the participants.

[Read more...](#)

The Escola's takes its signature railway training to Madrid

At the second Steering Council for the Promotion of the Port Community of Barcelona, the Escola Europea has assumed the presidency and coordination of the Training and Employment Working Group...

[Read more...](#)

Escola presents its current and future projects and training to Lluís Salvadó, the President of the Port of Barcelona

As part of his welcome and incorporation into the presidency of the Port of Barcelona, Lluís Salvadó visited the Barcelona headquarters of the Escola Europea – Intermodal Transport.

[Read more...](#)

[More News](#)

Did you like our contents?
Share them with your network



© 2023 Escola Europea - Intermodal Transport
Terminal Drassanes
Placeta de l'Areté 1
08039 Barcelona
Tel: (+34) 93 298 6070
E-mail: info@escolaeuropea.eu

This email was sent to {{ contact.EMAIL }}
You received this email because you are subscribed to news of the

[Unsubscribe here](#)

